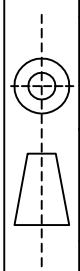


更改记录

更改标记	日期	更改内容	设计	审核	批准	设计	审核	工艺	标准化	批准
						签名	曹亚昭			
						日期	16.09.07			
						未注公差 ±0.3				



冀雅(廊坊)电子有限公司

产品型号	JYG-80048030G (R)-KT6L2-V01
文件编号	G80048030G (R)-NK-V01
分文件号	4
页数	1-1
单位	mm

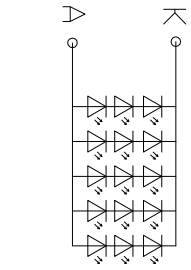
Pin No.	Symbol	Description	Pin No.	Symbol	Description
1	VLED+	Power for LED backlight (Anode)	26	G1	Green data
2	VLED+	Power for LED backlight (Anode)	27	G0	Green data input (LSB)
3	VLED-	Power for LED backlight (Cathode)	28	R7	Red data (MSB)
4	VLED-	Power for LED backlight (Cathode)	29	R6	Red data
5	GND	Power ground	30	R5	Red data
6	VCOM	Common voltage	31	R4	Red data
7	DVDD	Power for digital circuit	32	R3	Red data
8	MODE	DE/SYNC mode select (NOTE1)	33	R2	Red data
9	DE	Data Input enable	34	R1	Red data
10	VS	Vertical Sync Input	35	R0	Red data (LSB)
11	HS	Horizontal Sync Input	36	GND	Power Ground
12	B7	Blue data (MSB)	37	DCLK	DCLK 1 Sample clock
13	B6	Blue data	38	GND	Power Ground
14	B5	Blue data	39	L/R	Left/right selection (NOTE4,5)
15	B4	Blue data	40	U/D	Up/down selection (NOTE4,5)
16	B3	Blue data	41	VGH	Gate ON Voltage
17	B2	Blue data	42	VGL	Gate OFF Voltage
18	B1	Blue data (NOTE2)	43	AVDD	Power for Analog Circuit
19	B0	Blue data (LSB) (NOTE2)	44	RESET	Global reset pin (NOTE6)
20	G7	Green data	45	NC	NC
21	G6	Green data	46	VCOM	Common Voltage
22	G5	Green data	47	DITHB	Dithering function (NOTE7)
23	G4	Green data	48	GND	Power Ground
24	G3	Green data	49	NC	NC
25	G2	Green data	50	NC	NC

Pin No.	Symbol	Description
1	VDD1	Power, VDD1 = 3.3V
2	GND	Ground
3	RST	Reset, active high
4	SCL	I2C clock input
5	SDA	I2C data signal
6	INT	Interrupt output
7	NC	No connect
8	NC	No connect

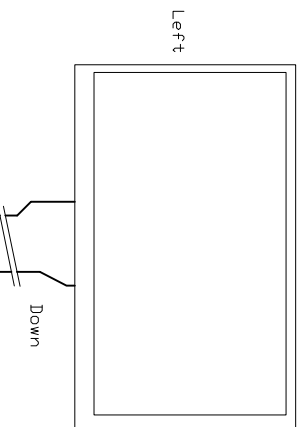
CTP Pins Description

NOTE:

- DISPLAY TYPE: 16M COLORS-TFT-NEGATIVE-TRANSMISSIVE  
Normally white
- VIEWING DIR.: 6:00 (Grey inversion)
- VDD = 3.3±0.3V
- OP. TEMP.: -20°C~70°C
- ST. TEMP.: -30°C~80°C
- Digital 24bit RGB
- BACKLIGHT LED CDL DR. WHITE, I<sub>F</sub> = 300mA, V<sub>F</sub> = 9.6V (typ), X8.4V ~ 10.5V  
LUMINANCE: typ. 420Cd/m<sup>2</sup>(LCM)  
X=0.26~0.36, Y=0.28~0.38
- ROHS
9. LCD DRAWING NO.: JY14B97
- TFT FPC match connector : Hirose FH12A-50S-0.5H or equivalent
- CTP FPC match connector : Molex 54548-0871 or equivalent
- CTP IC: PIXCIR Tango-C48



Note 5: Definition of scanning direction.  
Refer to the figure as below.



Note 1: DE/SYNC mode select. Normally pull high.  
When select DE mode, MODE=1, VS and HS must pull high.  
When select SYNC mode, MODE=0, DE must be grounded.  
Note 2: When input 18 bits RGB data, the two low bits of R,G and B data must be grounded.  
Note 3: Data shall be latched at the falling edge of DCLK.  
Note 4: Selection of scanning mode

Setting of scan control input	Scanning direction
U/D	L/R
GND	DVDD
DVDD	GND
GND	GND
DVDD	DVDD

Note 6: Global reset pin. Active low to enter reset state.  
Suggest to connect with an RC reset circuit for stability. Normally pull high.  
Note 7: Dithering function enable control, normally pull high.  
When DITHB=1, Disable internal dithering function,  
When DITHB=0, Enable internal dithering function.

更改记录		设计	审核	批准	日期	更改内容
更改标记	日期	设计	审核	批准	日期	更改内容
		曹亚超			16.09.07	

设计	审核	工艺	标准化	批准	产品型号
曹亚超					JY6-800480306 (R) -KT6L2-V01
日期					文件编号
16.09.07					6800480306 (R) -MX-V01
					号文件号
					4
					页数
					1-2 ??
					mm

公差	±0.3	
----	------	--

翼雅(德坊)电子有限公司

# JIYAKLANGFANG) ELECTRONICS CO.,LTD

PRODUCT DRAWING	CUSTOMER DRAWING:	
	FILENAME	TOTAL PAGES: 3
PRODUCT NO. JYG-80048030G(R)-KT6L2-VD1	<input checked="" type="checkbox"/> INITIATE <input type="checkbox"/> REVISE	ORIGINAL DATE 16.09.06

## REVISIONS

REV	DESCRIPTION	DATE