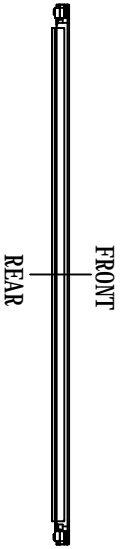


NOTE:

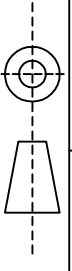
1. POWER CONNECTOR: ACES 91208-01001 OR COMPATIBLE
1. MATING CONNECTOR: ACES 91209-01001 OR EQUIVALENT
2. LVDS CONNECTOR: STARCONN 093F30-B0B01A OR COMPATIBLE
- MATING CONNECTOR: STARCONN 107J30-100000-00 (093J30-000000-00) OR EQUIVALENT



REVISIONS

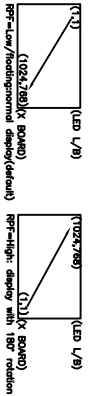
MARK	DATE	DESCRIPTION	DRAWN	CHECK	APPROVE	DRAWN	CHECK	APPROVE	PART NO.	JY-G-102476804G(R)-KT01.2-VA
						HuoXuepeng			DWG NO.	G102476804G(R)-WK
						2015. 05. 14			SUB-DWG NO.	4
									PAGE	1-1
									UNIT	mm
									JYK(LANGFANG) ELECTRONICS CO.,LTD	

UNLESS OTHERWISE NOTED
TOLERANCES : ±0.5



CN1 PIN FUNCTION			
PIN	SYMBOL	DESCRIPTION	NOTE
1	VCC	Power Supply:+3.30v	
2	VCC	Power Supply:+3.30v	
3	VCC	Power Supply:+3.30v	
4	GND	Ground	
5	GND	Ground	
6	GND	Ground	
7	RPT1	Reverse Panel Function(Display Rotation)	3
8	NC	No Connection	
9	NC	No Connection	
10	NC	No Connection	
11	SEL6/8	6/8 Bits Select	4
12	GND	Ground	
13	NC	No Connection	
14	GND	Ground	
15	RX0-	Negative Transmission Data of Pixel 0	
16	RX0+	Positive Transmission Data of Pixel 0	
17	GND	Ground	
18	RX1-	Negative Transmission Data of Pixel 1	
19	RX1+	Positive Transmission Data of Pixel 1	
20	GND	Ground	
21	RX2-	Negative Transmission Data of Pixel 2	
22	RX2+	Positive Transmission Data of Pixel 2	
23	GND	Ground	
24	RXCLK-	Negative of Clock	
25	RXCLK+	Positive of Clock	
26	GND	Ground	
27	RX3-	Negative Transmission Data of Pixel 3	
28	RX3+	Positive Transmission Data of Pixel 3	
29	GND	Ground	
30	NC	No Connection	2

Note (1) Connector Part No.: JAE,FI-XB30SRL-HF11 or compatible
 Note (2) Reserved for internal use. Please leave it floating.
 Note (3) Scanning direction:



Note (4) Default 8 Bits Input (NC or Low); Pull High is 6Bits Input.

GN2 PIN			
PIN	SYMBOL	DESCRIPTION	REMARK
1	Vf	Converter input voltage	12.0V
2	Vf	Converter input voltage	12.0V
3	Vf	Converter input voltage	12.0V
4	Vf	Converter input voltage	12.0V
5	VGND	Converter ground	Ground
6	VGND	Converter ground	Ground
7	VGND	Converter ground	Ground
8	VGND	Converter ground	Ground
9	EN	Enable pin	3.30V
10	ADJ	Backlight Adjust	PWM Dimming

NOTE:

1. DISPLAY TYPE:16.2M COLORS, TFT, NEGATIVE, TRANSMISSIVE
ANTI-GLARE,NORMALLY BLACK.
2. VCC=3.3±0.3V
3. VIEWING DIRECTION: ALL
4. OP. TEMP.: -20°C ~ +70°C
5. ST. TEMP.: -20°C ~ +70°C
6. LCD DRAWING NO.: JY15A64
7. BACKLIGHT: LED, WHITE, If=280mA
Vf:10.8V(Min),12.0V(Typ),13.2V(Max)
LCM BRIGHTNESS:>=3000CD/m²
8. RoHS

REVISIONS

MARK	DATE	DESCRIPTION	DRAWN	CHECK	APPROVE	DRAWN		CHECK	APPROVE	PART NO.	JY-G-102476804G(D)-KT01.2-1/A
						NAME	DATE				
						HuoXuepeng	2015. 05. 14			DWG NO.	G102476804G(D)-1W
										SUB-DWG NO.	4
										PAGE	1-2 UNIT mm
						UNLESS OTHERWISE NOTED TOLERANCES : ±0.5					
										JY(A(LANGFANG) ELECTRONICS CO.,LTD	

JIYA(LANGFANG) ELECTRONICS CO.,LTD

PRODUCT DRAWING

CUSTOMER DRAWING:

FILENAME

TOTAL PAGES: 3

PRODUCT NO.
JYG-102476804G(R) - KT0L2-VA

INITIATE REVISE

ORIGINAL DATE
2015.05.14

REVISIONS

REV

DESCRIPTION

DATE