

# TEST REPORT

NO.: A002C1009030801E-2

Date: Sep. 08, 2010

Page 1 of 5

**Customer:** Changzhou Chaoshun Electronic Technique Co., Ltd

**Address:** No.18, Leshan Road, Hanjiang West Road, Xinbei District, Changzhou, China

**Report on the submitted sample said to be**

**Sample name:** Aluminum-base copper-clad laminate

**Model:** CCAF-01

**Item/Lot No.:** /

**Material:** Aluminum、 Prepreg、 Copper foil

**Buyer:** /

**Supplier:** /

**Manufacturer:** /

**Sample received date:** Sep. 03, 2010

**Testing period:** From Sep. 03, 2010 to Sep. 08, 2010

**Testing Requested:**

As specified by client, to determine the Lead, Cadmium, Mercury, Hexavalent Chromium, PBB & PBDE content in the submitted sample in accordance with Directive 2002/95/EC (RoHS).

**Testing method:**

Testing Item	Pretreatment method	Measuring instrument	MQL
Lead (Pb)	IEC 62321: 2008, section 8/9	ICP-OES	2 mg/kg
Cadmium (Cd)	IEC 62321: 2008, section 8/9	ICP-OES	2 mg/kg
Mercury (Hg)	IEC 62321: 2008, section 7	ICP-OES	2 mg/kg
Chromium (Cr VI)	IEC 62321: 2008, Annex B/C	UV-VIS	0.02 mg/kg* 2 mg/kg
PBBs/ PBDEs	IEC 62321: 2008, Annex A	GC-MS	5 mg/kg

**Note:**

- \*0.02 mg/kg refers to the MQL of sample extraction liquid.

**Conclusion:**

-When tested as specified the submitted sample complied with the requirements of commission Decision of 18 Aug 2005 amending Directive 2002/95/EC notified under document 2005/618/EC

\*\*\*\*\*FOR FURTHER DETAILS, PLEASE REFER TO THE FOLLOWING PAGE(S)\*\*\*\*\*

Written by  
(Reporter)

Eileen

Approved by  
(Lab manager)

Mickey

Inspected by  
(Technical manager)

Weikin

# TEST REPORT

NO.: A002C1009030801E-2

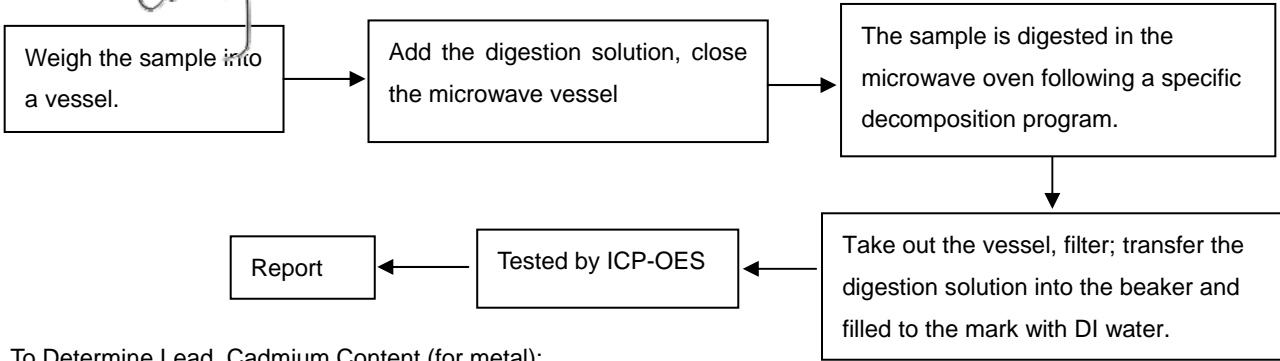
Date: Sep. 08, 2010

Page 2 of 5

**Test Flow:**

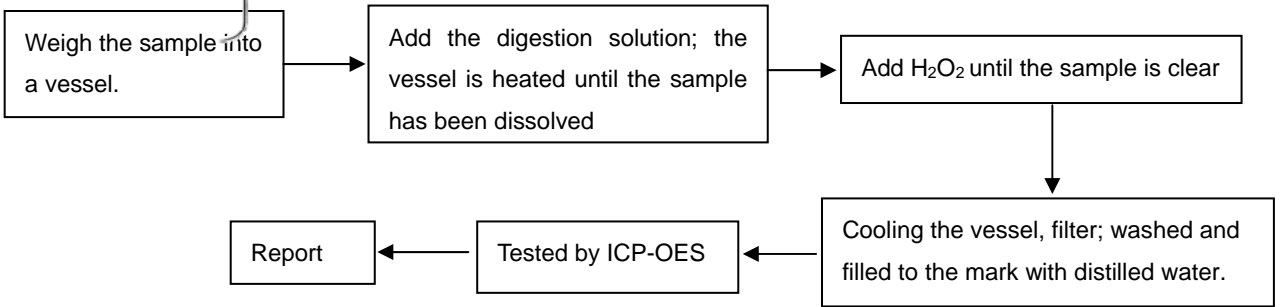
1. To Determine Lead, Cadmium Content (for Polymer):

Tested by: *Condy*



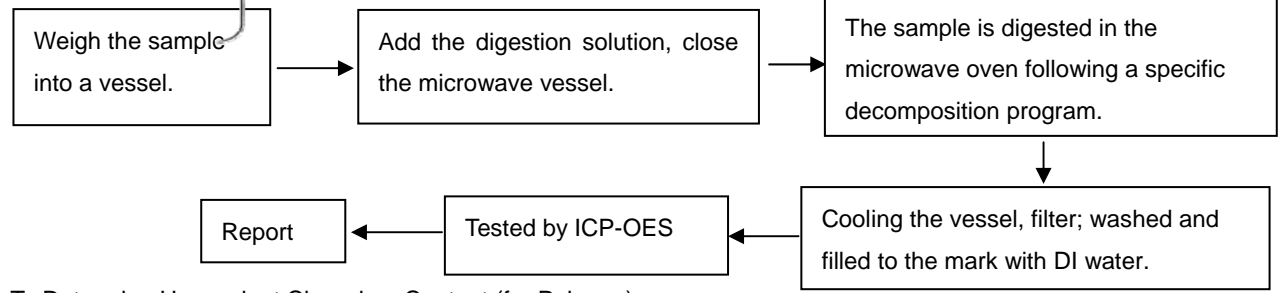
2. To Determine Lead, Cadmium Content (for metal):

Tested by: *Condy*



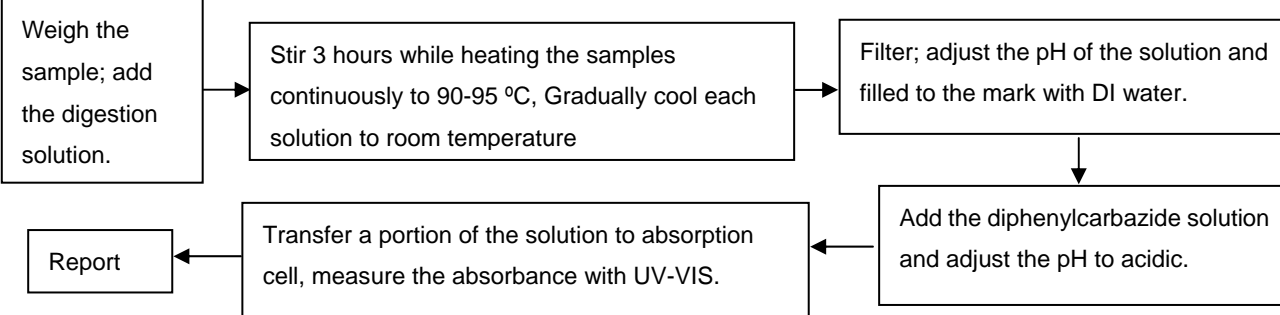
3. To Determine Mercury Content:

Tested by: *Condy*



4. To Determine Hexavalent Chromium Content (for Polymer):

Tested by: *Danae*



# TEST REPORT

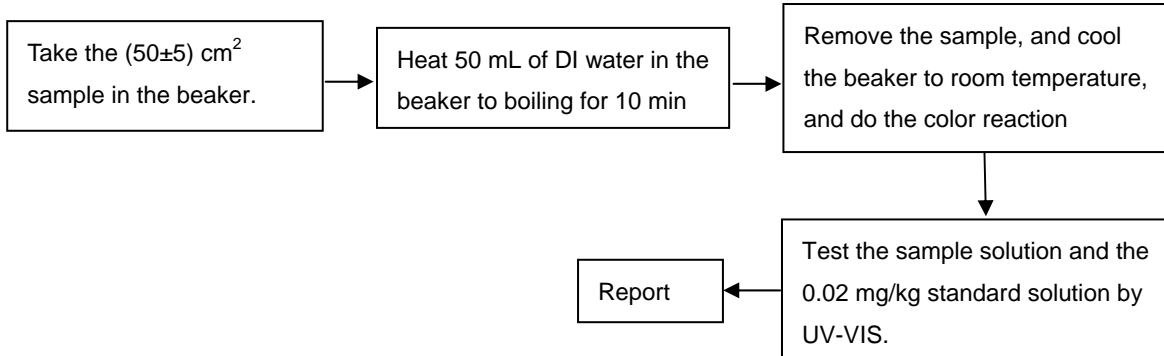
NO.: A002C1009030801E-2

Date: Sep. 08, 2010

Page 3 of 5

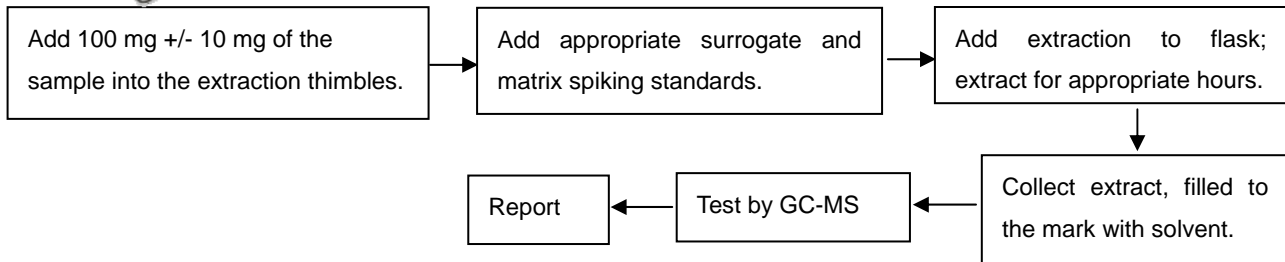
## 5. To Determine Hexavalent Chromium Content (boiling- water- extraction) in metals:

Tested by: *Danae*



## 6. To Determine PBBs/PBDEs Content:

Tested by: *Carina*



# TEST REPORT

NO.: A002C1009030801E-2

Date: Sep. 08, 2010

Page 4 of 5

## Test Results:

Item	Unit	RoHS Limit	A	B	C
Lead (Pb)	mg/kg	1000	N.D.	N.D.	N.D.
Cadmium (Cd)	mg/kg	100	N.D.	N.D.	N.D.
Mercury (Hg)	mg/kg	1000	N.D.	N.D.	N.D.
Chromium(CrVI) by boiling water extraction	/	/	Negative	/	/
Chromium (CrVI)	mg/kg	1000	/	N.D.	N.D.

Flame Retardants	Unit	RoHS Limit	B	C
PBBs	mg/kg	1000	N.D.	N.D.
MonoBB	mg/kg	/	N.D.	N.D.
DiBB	mg/kg	/	N.D.	N.D.
TriBB	mg/kg	/	N.D.	N.D.
TetraBB	mg/kg	/	N.D.	N.D.
PentaBB	mg/kg	/	N.D.	N.D.
HexaBB	mg/kg	/	N.D.	N.D.
HeptaBB	mg/kg	/	N.D.	N.D.
OctaBB	mg/kg	/	N.D.	N.D.
NonaBB	mg/kg	/	N.D.	N.D.
DecaBB	mg/kg	/	N.D.	N.D.
PBDEs	mg/kg	1000	N.D.	N.D.
MonoBDE	mg/kg	/	N.D.	N.D.
DiBDE	mg/kg	/	N.D.	N.D.
TriBDE	mg/kg	/	N.D.	N.D.
TetraBDE	mg/kg	/	N.D.	N.D.
PentaBDE	mg/kg	/	N.D.	N.D.
HexaBDE	mg/kg	/	N.D.	N.D.
HeptaBDE	mg/kg	/	N.D.	N.D.
OctaBDE	mg/kg	/	N.D.	N.D.
NonaBDE	mg/kg	/	N.D.	N.D.
DecaBDE	mg/kg	/	N.D.	N.D.

## Specimen Description:

A: Silvery metal aluminum plate

B: White translucent solid sheet

C: Coppery metal foil

# TEST REPORT

NO.: A002C1009030801E-2

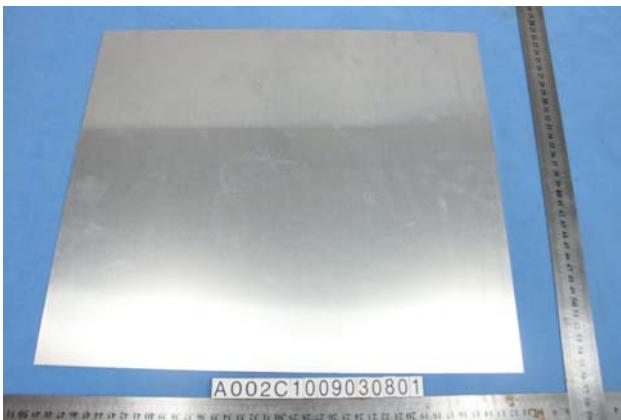
Date: Sep. 08, 2010

Page 5 of 5

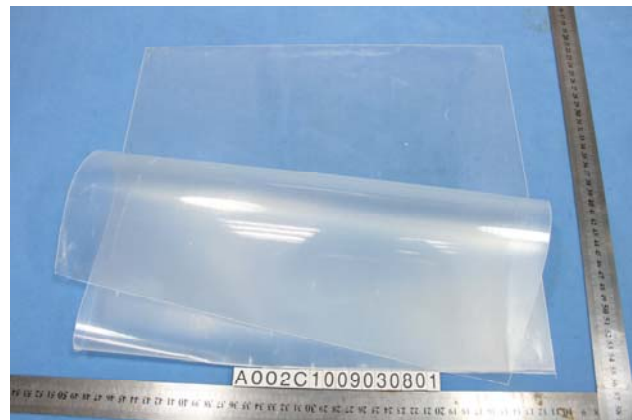
**Note:**

- Specimens, which requested to determine Cadmium, Mercury and Lead Content, have been dissolved completely.
- mg/kg=ppm
- N.D.=not detected(<MQL)
- MQL=Method Quantitation Limit
- Negative=Absence of Cr(VI);
- Positive=Presence of Cr(VI);
- Photo is included

### Photographs of Samples



A: Silvery metal aluminum plate



B: White translucent solid sheet



C: Coppery metal foil

\*\*\*End of Report\*\*\*